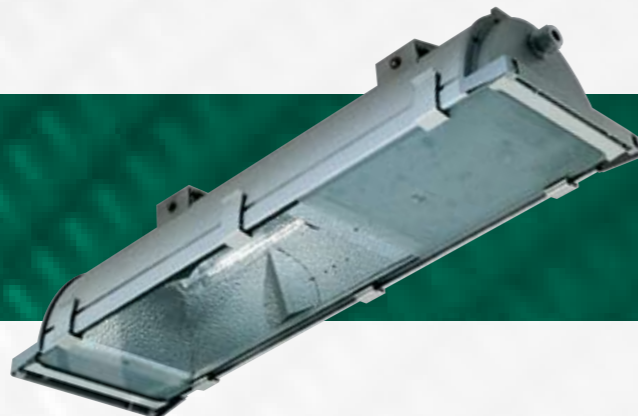


SQUAT HID



The Squat HID is a rectangular low profile IP65 fixture that can offer a better illumination alternative to bulky high bay fixtures. This high-quality luminaire features an extruded aluminium body in an appealing contemporary design. It is specifically designed for the lighting of industrial and commercial projects as well as large areas in general. Its reflector system provides maximum light output and control making it ideal for situations where even lighting for both horizontal and vertical surfaces is important, for example with high-rise warehouse storage areas. A reflector insert is provided to convert the default rectangular distribution into a square pattern. Typical applications of the Squat HID include warehouses, cold stores, retail centres, indoor sporting arenas, covered car parks, transit centres and tunnels.

FEATURES

BODY

The rigid extruded aluminium body is anodised. High-pressure cast aluminium end pieces complete the fixture body. These are chromate pre-treated then powder-coated silver. They are sealed to the body with silicon one-piece gaskets.

LENS

The lens is made from toughened safety glass.

REFLECTOR

The reflector is made from high purity and polished anodised aluminium which is engineered to provide maximum light output and control. It provides either a longitudinal light distribution or a square light distribution by removing the "V" shaped side reflectors.

GEAR

Integral control gear is supplied. The built-in control gear tray is easily accessible and can be removed by hand without the need of tools.

INSTALLATION & MAINTENANCE

The fixture is supplied with a pair of extruded aluminium brackets for ceiling or wall mounting installations. The lamp and control gear are easily accessible via the quick release catches on the hinged glass lens visor. The reflector assembly then hinges down, allowing easy access to the control gear. As an in-built safety feature for maintenance operations, when the gear tray is hinged down an isolating switch disconnects the mains supply.

IP RATING

The protection rating is IP65. A one-piece silicone anti-ageing gasket provides a durable seal between the lens panel and the fixture.

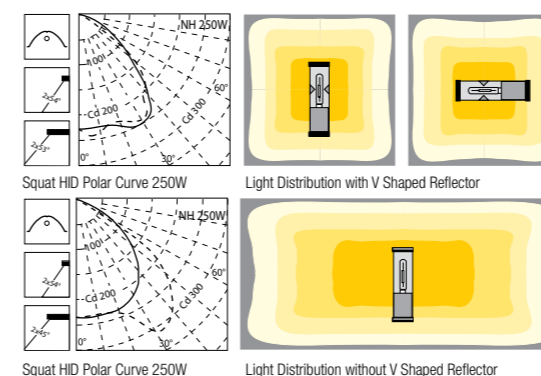
SPECIAL FEATURES

An instant light option is also available on request which includes an auxiliary lamp socket (maximum 250W/E27 tungsten halogen lamp) to provide instant light during the start-up of the discharge lamp.

MEASUREMENTS



PHOTOMETRICS



Utilisation Table - Squat 250W MH

Reflectances			Room Index								
Ceiling	Wall	Floor	0.75	1.00	1.25	1.50	2.00	2.50	3.00	4.00	5.00
0.70	0.50	0.20	0.54	0.62	0.68	0.73	0.78	0.82	0.85	0.88	0.90
0.70	0.30	0.20	0.48	0.56	0.63	0.68	0.74	0.78	0.81	0.85	0.87
0.70	0.10	0.20	0.44	0.52	0.59	0.64	0.71	0.75	0.78	0.83	0.85
0.50	0.50	0.20	0.53	0.60	0.66	0.71	0.76	0.79	0.82	0.85	0.86
0.50	0.30	0.20	0.47	0.55	0.62	0.66	0.72	0.76	0.79	0.82	0.84
0.50	0.10	0.20	0.43	0.51	0.58	0.63	0.69	0.73	0.76	0.80	0.83
0.30	0.50	0.20	0.51	0.59	0.65	0.69	0.74	0.77	0.79	0.81	0.83
0.30	0.30	0.20	0.47	0.54	0.61	0.65	0.71	0.74	0.76	0.80	0.82
0.30	0.10	0.20	0.43	0.51	0.57	0.62	0.68	0.72	0.74	0.78	0.80
0.00	0.00	0.00	0.41	0.49	0.55	0.59	0.65	0.69	0.71	0.74	0.76
BZ-class			3.00	3.00	3.00	3.00	3.00	3.00	3.00	3.00	3.00
SHRnom : 1.50						SHRmax : 1.715					

CODE	PRODUCT DESCRIPTION	WATTAGE	TYPE	LAMP	CONTROL GEAR	LIGHT DISTRIBUTION	REFLECTOR TYPE
------	---------------------	---------	------	------	--------------	--------------------	----------------

Operates from approved mercury vapour control gear (IEC 60188)

164040	SQUAT HID ML250/L	250	MH	MT250LSH/BH	INTEGRAL	ADJUSTABLE	SYMMETRICAL
164030	SQUAT HID S220/L	235	HPS	NHT220LX	INTEGRAL	ADJUSTABLE	SYMMETRICAL

Operates from approved high pressure sodium control gear (IEC 60662)

164020	SQUAT HID S250/L	250	HPS	NHT250	INTEGRAL	ADJUSTABLE	SYMMETRICAL
--------	------------------	-----	-----	--------	----------	------------	-------------

All fixtures supplied with lamp and 240V(AUS)/ 230V(NZ) 50Hz control gear unless otherwise stated. Pictorial is representative only. Specifications may change without notice.

ACCESSORIES

CODE	PRODUCT
-	POLE/RAIL MOUNTING CLAMPS 33-42MM DIA (A0193)

